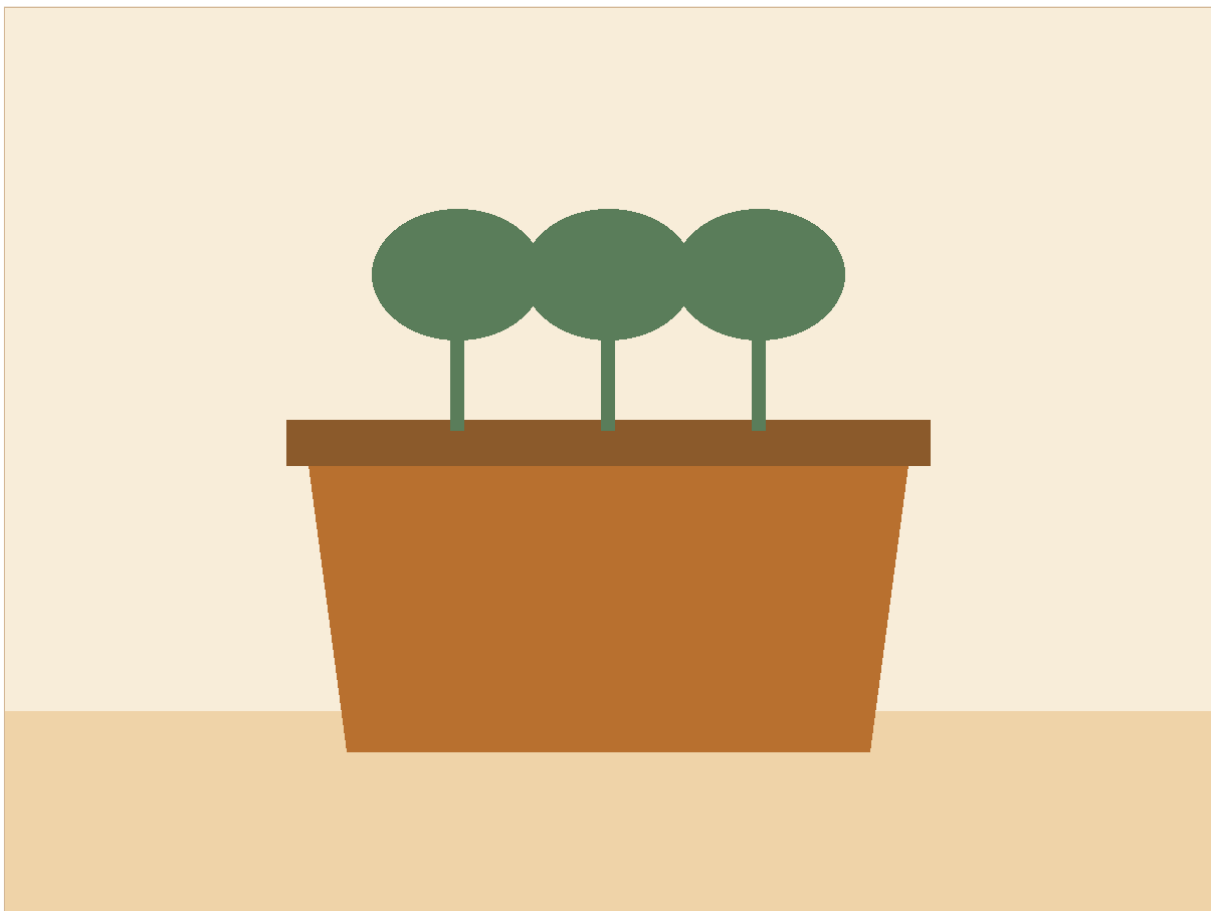


Cedar Garden Planter Box

by Logan



Outdoor & Garden · Beginner · July 9, 2026

License: CC BY 4.0 — Attribution

Overview

This is an Example plan, has not been validated

A tapered cedar planter that looks store-bought and takes an afternoon. Cedar fence pickets are the secret: cheap, naturally rot-resistant, and already the right thickness.

No fancy joinery — everything is glued and nailed to four corner posts. The taper comes free from cutting the corner posts at an angle.

Materials

Hardware & consumables

- 1 box × Galvanized brad nails — 1 1/4"
- Exterior wood glue
- 1 × Landscape fabric — 3' × 3'

Lumber & sheet goods

- 6 × Cedar fence picket — 5/8" × 5 1/2" × 6'
- 1 × Cedar 2x2 — 8'

Tools

- Circular saw (*or: Jigsaw, Miter saw*)
- Brad nailer — Pre-drill and screw if you have no nailer (*or: Drill*)

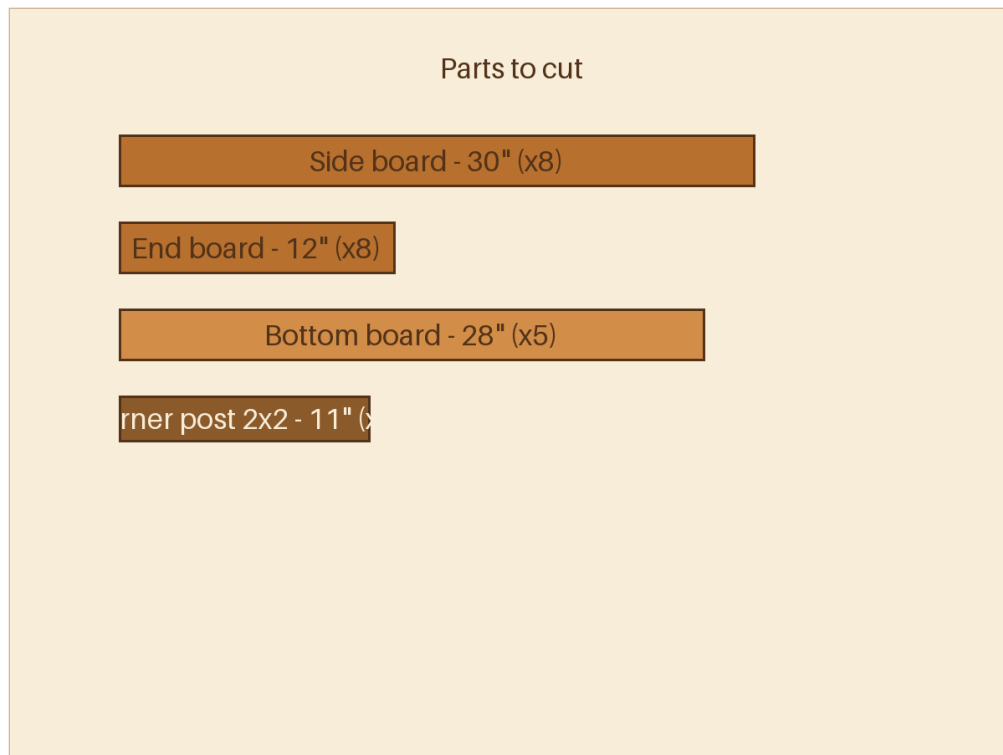
Build steps

Step 1 — *Cut the parts*

From the pickets cut:

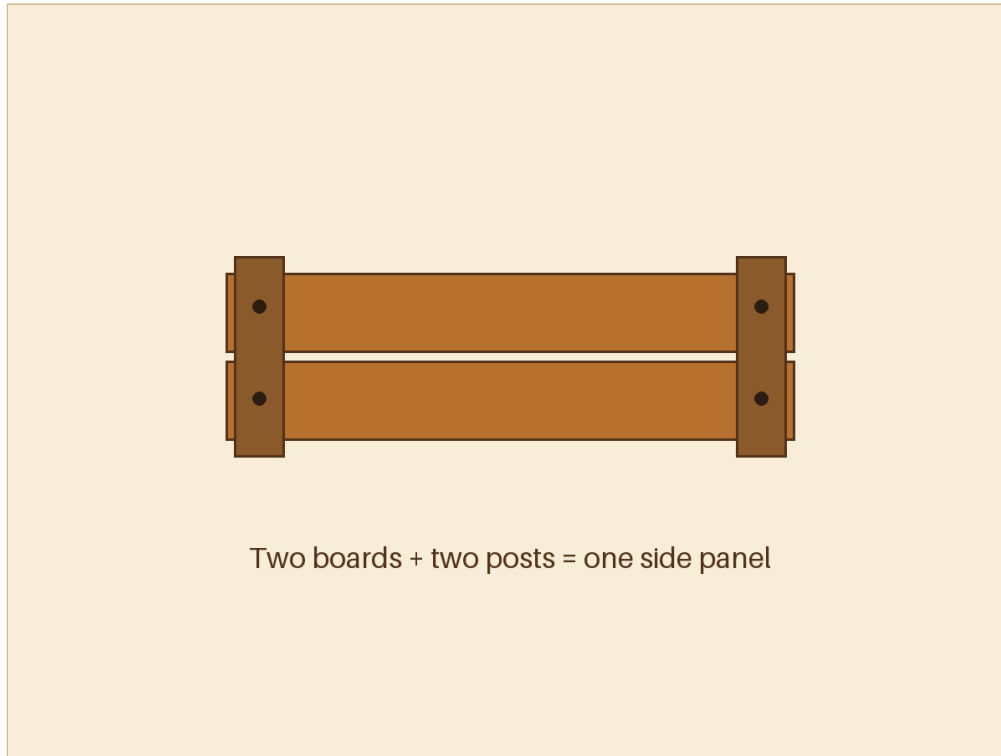
- 8 side boards at 30"
- 8 end boards at 12"
- 5 bottom boards at 28"

From the 2x2 cut four corner posts at 11".



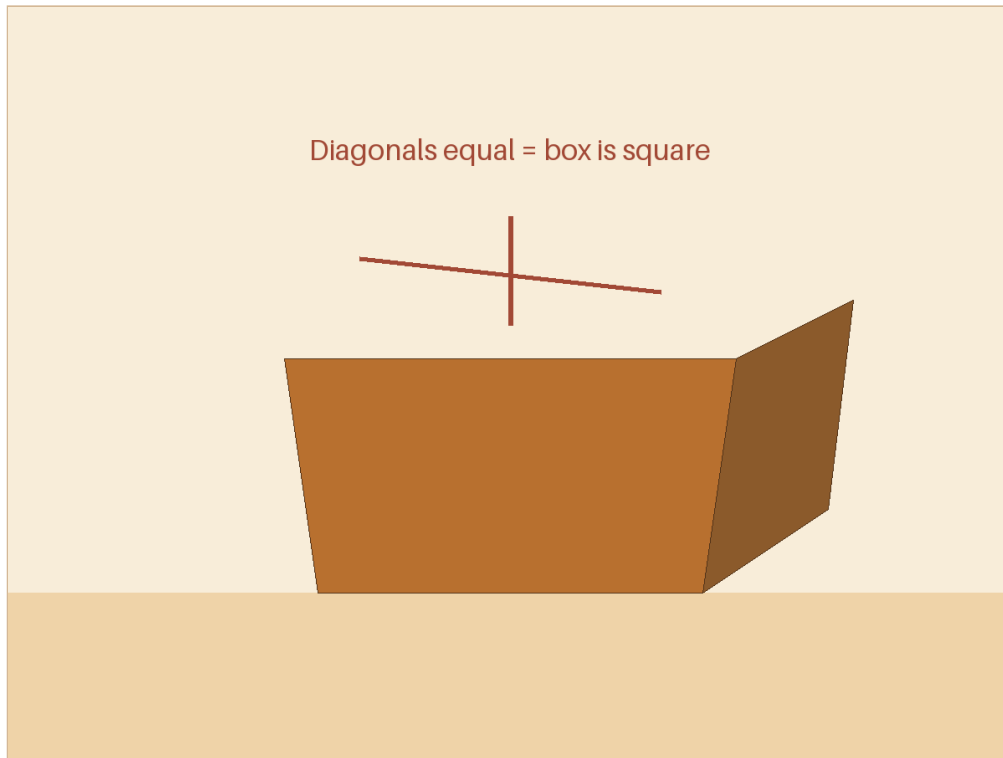
Step 2 — *Build the two long sides*

Lay two 30" boards edge to edge, place a corner post flush at each end, glue and nail through the boards into the posts. You now have two side panels with posts attached.



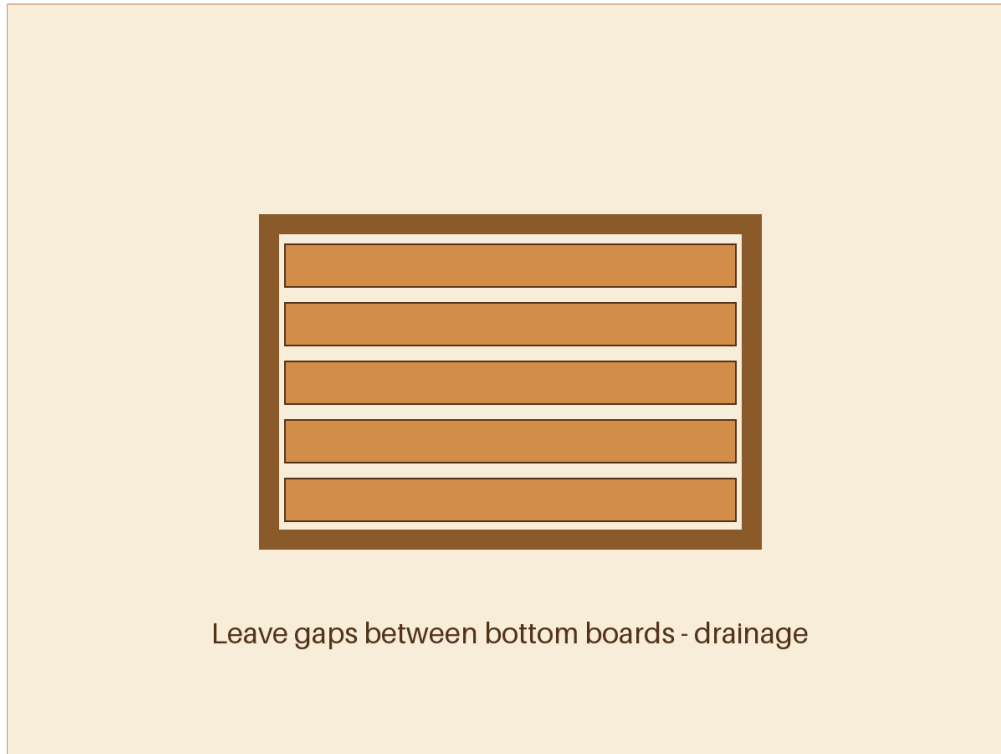
Step 3 — Close the box

Stand the side panels up and bridge them with the 12" end boards — glue and nail into the same corner posts. Check for square by measuring the diagonals; adjust until they match.



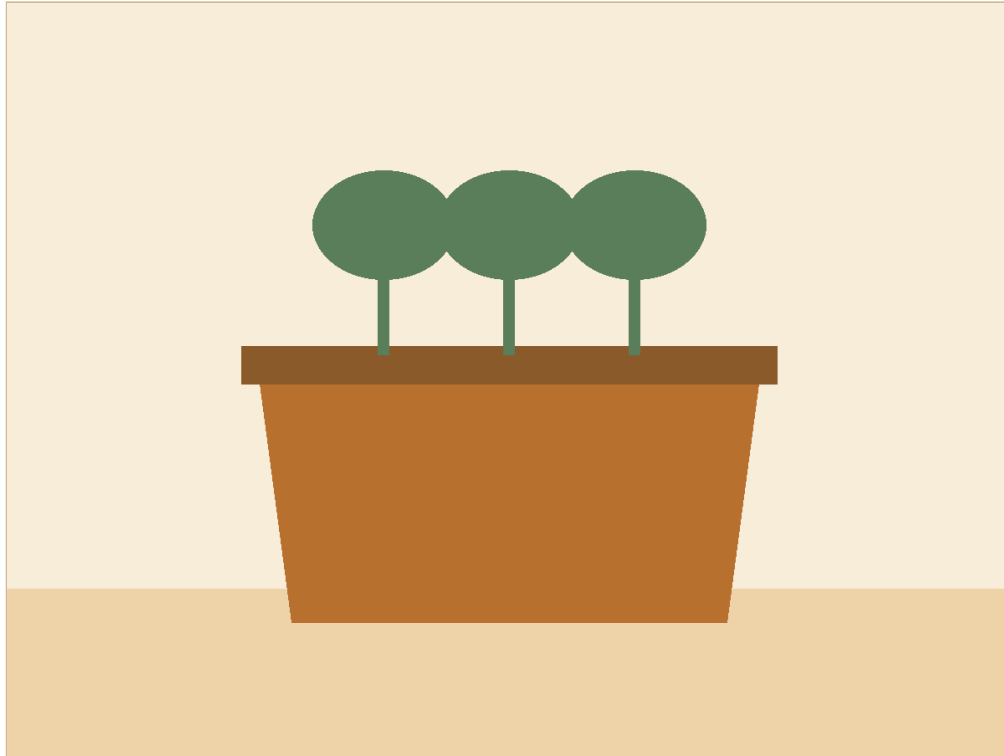
Step 4 — *Fit the bottom*

Drop the 28" bottom boards inside so they rest on the lower edge, leaving small gaps between them for drainage. Nail through the sides into the bottom boards. Drill a few extra 1/2" drainage holes if your plants hate wet feet.



Step 5 — *Line and fill*

Staple landscape fabric inside — it keeps soil in and moisture off the wood. No finish needed: cedar weathers to a silver grey, or oil it with an exterior finish if you prefer the fresh-cut colour.



Downloaded from The Kerf · CC BY 4.0 — Attribution · Plan by Logan